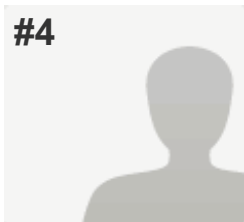


#4



COMPLETE

Collector: survey collector (Email)
Started: Friday, March 06, 2015 4:48:56 PM
Last Modified: Friday, March 06, 2015 4:58:40 PM
Time Spent: 00:09:43
First Name: Jeffrey
Last Name: Washington

Email:
Custom Data: City Council
IP Address: 97.122.176.22

PAGE 1

Q1: What is your name please?

Jeffery Washington

Q2: Which Counsel district do you hope to represent?

At Large

Q3: Please tell us the best way to contact you if we have a question..telephone or email. Please provide either or both in the comment box below.

PAGE 3

Q4: Do you believe it is the ultimate obligation of City Council members to represent and advocate for their constituents in the neighborhoods they represent, rather than expedite the Mayor's office or private businesses that may benefit from these types of transactions between governmental entities?

Yes

Q5: Do you believe that preserving strong public neighborhood schools in each of our communities is very important to the viability and strength for the future of our neighborhoods?

Yes

PAGE 5: I. DESIGNATION OF UNDESIGNATED PARKS, PROTECTION OF OPEN SPACE, MORE PARKLAND

Q6: INC, in response to a request from the Department of Parks and Recreation, formed a committee to aid the department's effort to designate undesignated parks. While this committee has made progress over the past two years, the work is not finished. Would you support a concerted effort within all city departments affected to complete the designation of all undesignated Denver parks that are legally available for designation?

Yes

Q7: In addition to designating undesignated parks, we also need to prevent the transfer of open space within designated parks to institutions within parks. Over many years, open space in designated parks has been re-allocated by the Manager of Parks and Recreation to institutions within parks such as recreation centers, museums, and zoos. It is important that open space within parks is protected. Would you ask for policy changes to protect open space within designated parks?

Yes

Q8: There is inadequate urban parkland in Denver given the size, density, and expected growth of Denver's population. For example: The city had 555,000 residents in 2000 and is projected to have 700,000 in 2020. While the Hancock administration may add additional parkland to the park system, the current plans focus on the acquisition of land at the periphery of Denver. We need parkland in the center of the city where the population is growing and "density" is a goal of the administration's urban development plan. Would you support the acquisition of additional parkland and open space within the center of the City of Denver?

Yes

Q9: The urban parkland that does exist is viewed increasingly as a site for multiple and oftentimes conflicting purposes-- opportunities to experience nature, spaces in which teams can play, and sites for large festivals. These uses of the same land has created problems within our parks including damage to parkland and vegetation, limitation of public access to parks, and distress for neighborhoods bordering parks (eg., unacceptable levels of noise, traffic congestion, threats to public safety, and problems parking). As a result, a site is needed for large ticketed events such as festivals that is not located within neighborhoods. Well-lighted playing fields with bathrooms and parking outside of city parks are also required. Would you support the development of a Festival Site?

Yes

Q10: Would you explore opportunities for and support the development of playing fields outside of city parks for Denver citizens?

Yes

PAGE 7: III. USE OF RECYCLED WATER IN PARKS

Q11: Would you ask the City administration to convene a panel of independent experts in plant physiology, soil chemistry etc. to evaluate the safety of the type of recycled water used in our parks and to report the results to the public?

Yes

Q12: If the risks of the type of recycled water currently in use are found to be too high, would you support all steps necessary to eliminate these risks?

Yes

PAGE 8: IV. PARK ADMINISTRATION

Q13: Effective government requires citizen engagement. INC has received multiple complaints and over many years pertaining to the use of parks. Complaints include the difficulty citizens have in influencing park policies. A new Office of Special Events has been formed by the Mayor and its function will have an impact on what events occur in parks. Would you advocate for INC representation on an Advisory Board for the Office of Special Events?

Yes

Q14: Would you direct funds to the Department of Parks and Recreation to ensure enforcement of park rules and regulations within the entire park system?

Yes

PAGE 9: V. PARK FUNDING

Q15: Denver's park and parkway system is grossly under-funded. A broad range of funding sources must be pursued in order to sustain and to expand Denver' park system. This funding includes local and state-level dedicated revenue sources. Denver is surrounded by municipalities that fund their parks with a tax levy dedicated to parks. Would you support a tax levy to provide a stable funding source with which to acquire land for parks, open space, a festival site, playing fields, and for maintenance of all these for Denver's park system?

Yes

PAGE 11: Discretionary Projects

Q16: If elected, would you support an increase to Public Works funding for discretionary projects in neighborhoods?

Yes

PAGE 12: Committment to Vision Zero

Q17: Would you support Denver joining the ranks of cities that target elimination of traffic deaths and serious injuries as a moral priority by adopting a Vision Zero approach?

Yes

PAGE 13: Best Practices regarding sidewalk installation and maintenance

Q18: Would you support Denver pursuing and implementing best practices from other cities regarding sidewalk installation and maintenance, with the goal of increasing walkability?

Yes

PAGE 15

Q19: . Would you support the City of Denver engaging consultants to study the effects of parking on neighborhoods in areas where high rise development is contemplated prior to approval of the development. If so, what parking study process would you suggest?

Yes

Q20: Do you believe the 2010 Zoning Code adopted by City Council in 2010 has benefited all neighborhoods in Denver or some neighborhoods? Please cite examples.

No,

Examples:
Cherry Creek North is a prime example of overdevelopment.

Q21: What changes do you believe need to be made to the 2010 Zoning Code,If any, and why.

There needs to be density requirements in place where it makes sense.

Q22: Will you urge the Mayor and city officials to appoint representatives of residential neighborhood organizations to all city boards, commission, advisory committees, collaborative groups and task forces which consider planning and zoning issues. If so, describe the efforts you would take to ensure such appointments are made.

Yes,

Comment:
Making it a requirement through ordinance.

Q23: INC has been advised that the Director of Community Planning and Development is recommending Blueprint Denver be revised and updated. Do you support such a recommendation and describe what process you would support to ensure neighborhood participation.

Yes

Q24: Please describe your vision of “smart growth” for the City of Denver in ten words or less. The vision should capture stakeholder expectations of your anticipated leadership on City Council.

Infrastructure first.

Q25: . Entertainment districts which extend the hours for alcohol to be served, often until 4:00 a.m., have been adopted in a few cities throughout Colorado. Would you support an entertainment district in certain areas in Denver? If so, where and until what time?

No

Q26: Short term rentals, that is rentals for less than 30 days are now illegal in Denver residential neighborhoods. Do you support the adoption of an ordinance which would permit short term rentals in Denver residential neighborhoods. If not, why not. If you would support an ordinance to allow short term rentals in residential neighborhoods, please describe the process you would support, including the process for funding.

Yes

